

VERTICAL LIFTING EQUIPMENT

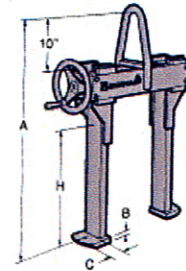
If you use coil annealing furnaces or simply need to store coils in a vertical or “eye to the sky” position Bushman AvonTec has developed a number of products that enable you to handle vertical coils in a safe, efficient and economical manner. Some of these products include Bushman AvonTec’s automatic latch assembly that enhances efficiency by requiring only one person for operation.



In addition to the standard products described below, Bushman AvonTec provides custom engineered designs to meet specific dimensional, capacity and special application requirements. All of Bushman’s vertical lifting equipment is designed to provide rugged service while requiring only a minimum of maintenance. All units are designed and manufactured to meet or exceed ASME-ANSI Standards B30.20 and BTH-1.

MODEL 2020 ID COIL LIFTER

Bushman AvonTec model 2020 ID coil lifters lift coils by supporting them on lifting pads. The lifter’s legs, operated by an ergonomically designed hand wheel, contract to permit entrance into the core of the coil. The lifter is lowered and one lifting pad is placed under the coil. The operator then turns the hand wheel to extend the legs outward until both lifting pads are under the coil and the legs are pressed against the ID. The coil can now be raised and transported. The legs are held in place with a self-locking adjustment mechanism that prevents accidental disengagement.



Coils must be stored on spacers to permit the lifting pads to extend under the coil for proper engagement. To release the lifter, the legs are retracted until both lifting pads clear the ID of the coil. The lifter can then be raised and moved away from the coil.



CAPACITY	ID RANGE	COIL WIDTH H	A	B	C	WT. (LB.)
4,000 lb.	16" to 24"	24"	49"	½"	4"	265
6,000 lb.	16" to 24"	24"	49"	5/8"	4"	265
6,000 lb.	16" to 24"	30"	55"	5/8"	4"	275
10,000 lb.	16" to 24"	24"	49"	¾"	4"	295
10,000 lb.	16" to 24"	30"	55"	¾"	4"	310
15,000 lb.	16" to 24"	24"	49"	1"	4"	330
15,000 lb.	16" to 24"	30"	55"	1"	4"	345
20,000 lb.	16" to 24"	24"	51"	1"	4"	410
20,000 lb.	16" to 24"	30"	57"	1"	4"	450

Solving Material Handling Problems

Below-the-Hook • Floor Based • Slit Coil Packaging

www.BushmanAvonTec.com

BTH - VLE 10-09

USA
800-338-7810

Sales@BushmanAvonTec.com



CANADA
800-844-8117

Tech@BushmanAvonTec.com

FOR MORE INFORMATION PLEASE CONTACT ARCON MACHINERY AS

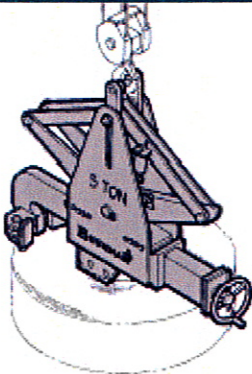
Arcon

MODEL M2020 MOTORIZED ID COIL LIFTER



This is a motorized version of the Model 2020. It can be used in high volume operations where stacking heights can be high.

MODEL 6104 LOW HEADROOM COIL GRAB

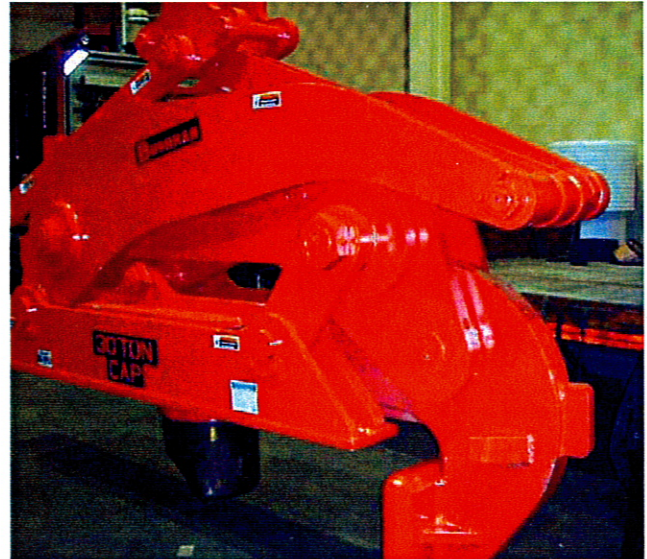


The Bushman AvonTec Model 6104 coil grab handles coils with various rim sizes in applications with severely limited headroom. In contrast to the 6100 grab that requires significant vertical travel space for operation, the model 6104 engages coils by means of a hand wheel activated adjustment mechanism.

The operator simply turns the hand wheel until both pads contact the coil surface. The linkage assembly generates the actual clamping pressure, and a minimum of vertical movement is required.

Gripping force for Bushman AvonTec's low headroom grab is greater than three times the total load weight.

MODEL 6100 VERTICAL RIM COIL GRAB



The Model 6100 Single Rim Vertical Coil Tong handles coils by gripping the ID and OD on one side of the coil. Gripping force is more than three times the coil weight.

The Model 6100 grab hangs level when empty and has a Bushman AvonTec automatic latch for safe and efficient engagement and disengagement. Lifting pads, lined with a variety of materials from soft urethane through hardened, serrated steel pads, securely grip the load.

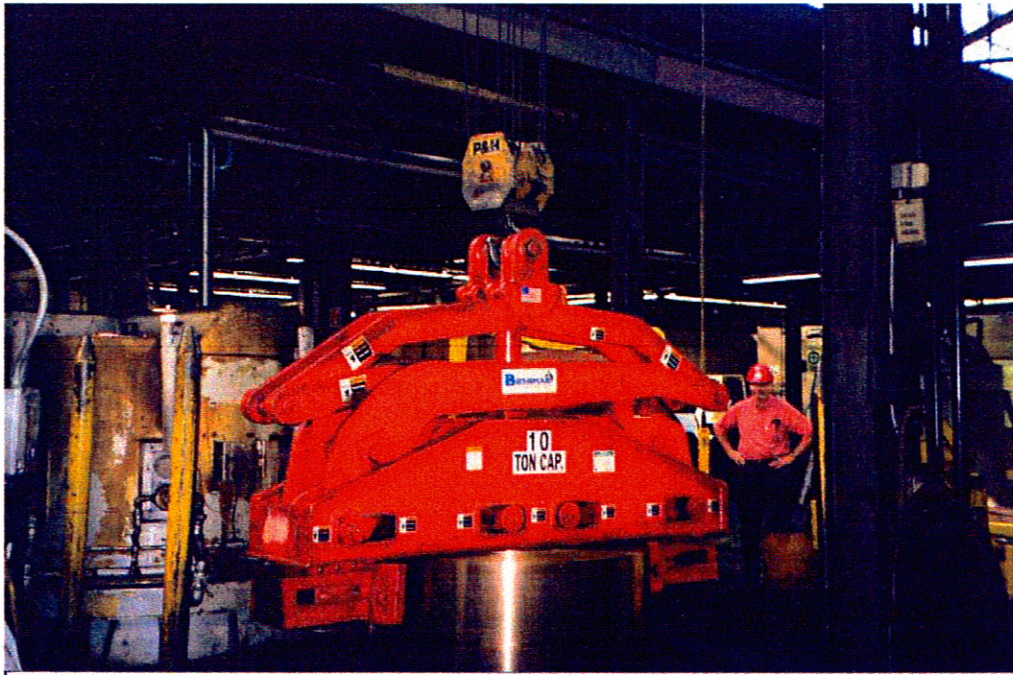
The Model 6100 Single Rim Vertical Coil Tong has a proven design that is available in capacities up to 50 tons. It can be built to suit your application.

MODEL 6107 DOUBLE RIM COIL GRAB

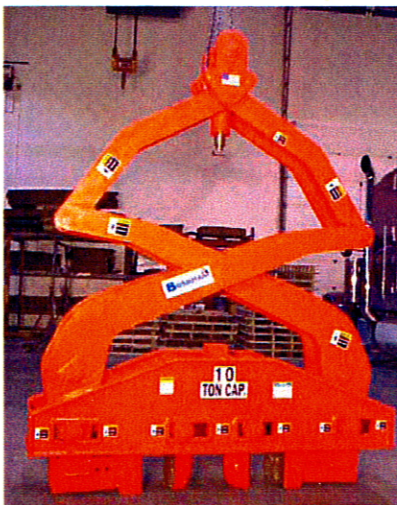
The Model 6107 double rim vertical coil tong handles vertical axis coils by gripping the ID and OD on both sides of the coil rim. It offers increased protection for the integrity of the coil since it distributes its clamping force over twice the area as does a single rim vertical coil tong. The outer jaws of Model 6107 double rim vertical coil tong are adjustable to accommodate a wide range of rim thicknesses. Gripping force is greater than three times the total load weight.

The double rim coil tong hangs level whether empty or loaded. It has a Bushman AvonTec automatic latch to provide safe and efficient engagement and disengagement.

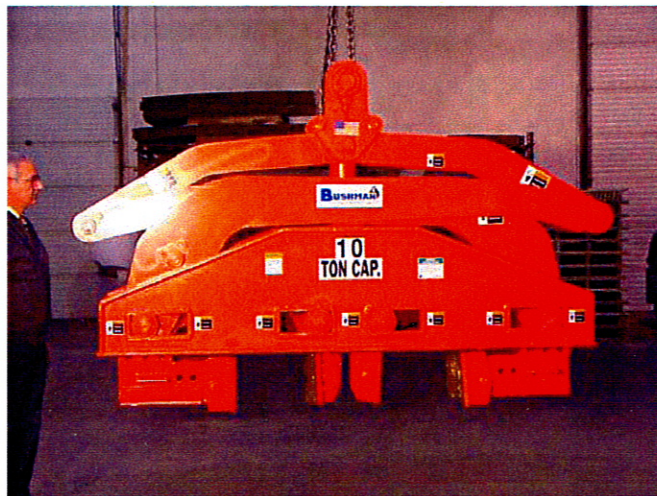
Lifting pads, lined with a variety of materials from soft urethane to hardened, serrated steel pads, securely grip the load.



Double rim coil tong



Tong closed



Tong open

Use Bushman AvonTec ReNEW to Refurbish Your Old Lifters

Model M2020 ID Lifter



Before

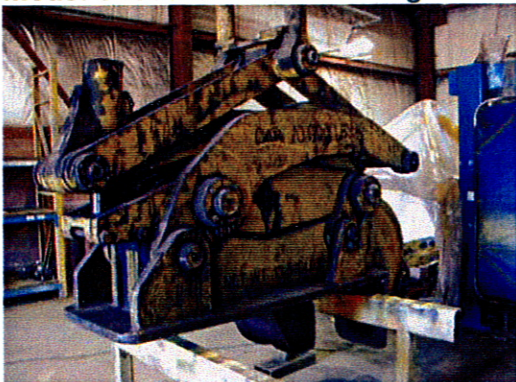


After



After again

Model 6100 Vertical Coil Tong

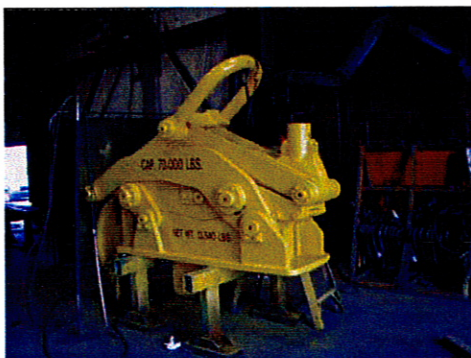


Before

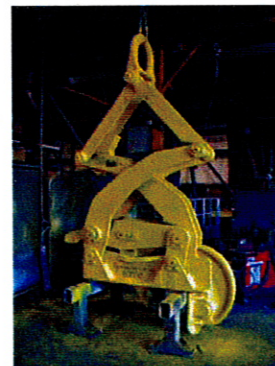
Vertical Coil Tong from Another Company, Rebuilt by Bushman AvonTec



Before



After



After

Bushman AvonTec Repairs All Brands.

USA
P.O. Box 309
Butler, WI 53007-0309

W133 N4960 Campbell Drive
Menomonee Falls, WI 53051

Phone: (800) 338-7810
(262) 790-4200
Fax: (262)-790-4202

CANADA
1680 Brampton Street
Hamilton, ON
Canada L8H 3S1

Phone: (800) 844-8117
(905) 689-7994
Fax: (905) 689-8472